



**KENDA**  
**AMERICANA**  
TIRE AND WHEEL

**PRODUCT CATALOG**



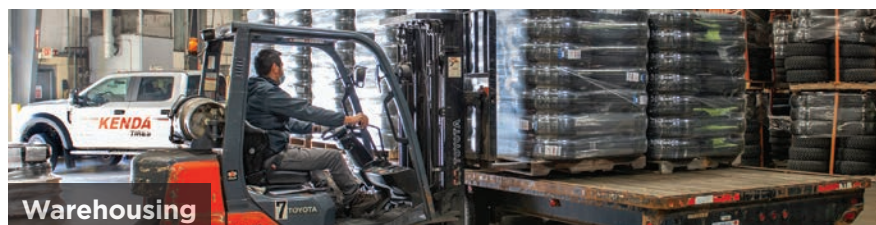
# ***THE KENDA ADVANTAGE.***

We are the Engineers, Chemists, Manufacturers plus Assemblers of world class tires and wheels.

At Kenda Americana Tire and Wheel (ATW), we strive to supply the best trailer tires, wheels and assemblies in the world. We can do that through the power of the Kenda family of companies where our team develops

our own designs, as well as tests and manufactures our own tires and wheels. As part of a global organization with over 12,000 employees, we have access to the best minds and materials on the planet.

No matter where your journey takes you, Kenda ATW is here to carry the load for you.







## ***LET KENDA CARRY YOU.***

Wherever your journey takes you, Kenda Americana Tire and Wheel (ATW) has the trailer tires, wheels and assemblies to carry you there. Serving original equipment manufacturers, distributors and retailers

in the towable trailer, utility, RV, marine and agricultural industries. Kenda ATW has a wide range of quality products for most applications.

***KENDA***  
Designed for Your Journey

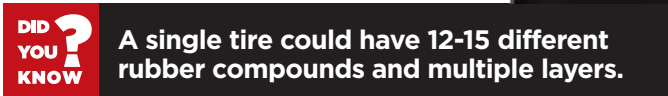
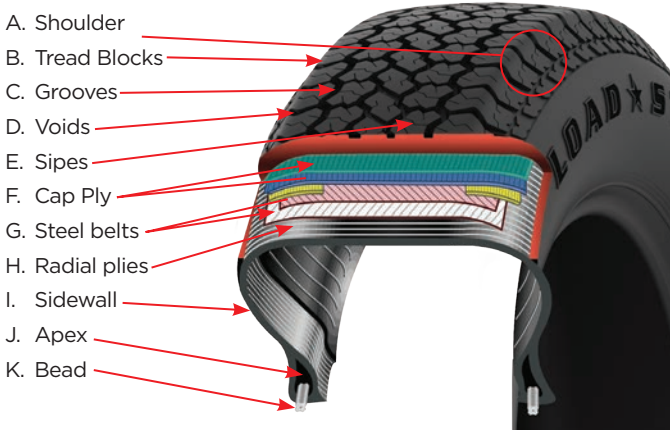




**All Kenda ATW tires are designed and tested in Akron, OH.**

## WHERE A TIRE BEGINS

A tire begins with a bunch of Zeros and Ones, on a design computer at Kenda America Technical Center (KATC) in Akron, Ohio. We have a team of engineers that have many years of tire experience that work closely with a development team to determine the features needed for each tire. A tire that will carry a heavy load for short distance can be quite different than a tire for a long haul RV. Once the needs are determined, the engineers work closely with our chemists to determine the rubber compounds for optimal performance.



**A single tire could have 12-15 different rubber compounds and multiple layers.**

## SO MANY THINGS GO INTO ONE TIRE:

Tires are a complex mixture of many components and layers. The most obvious are the treads and the sidewalls but underneath is a complex web of materials that make each tire perform differently.

Understanding tire basics will help guide you in making sure the tire you buy will give you the performance you need for each situation.

Tread patterns, composed of different rubber blocks, grooves, voids and sipes, give the tire its road gripping power. Different materials and amount of reinforcement layers of belts and plies make the tire stronger and able to carry different loads. The bead, a combination of steel and a different rubber material than the tread, grabs and holds the wheel tight. Sidewalls and shoulders, yet again another rubber compound, give the tire flexibility for loads as well as puncture resistance and ozone protection.

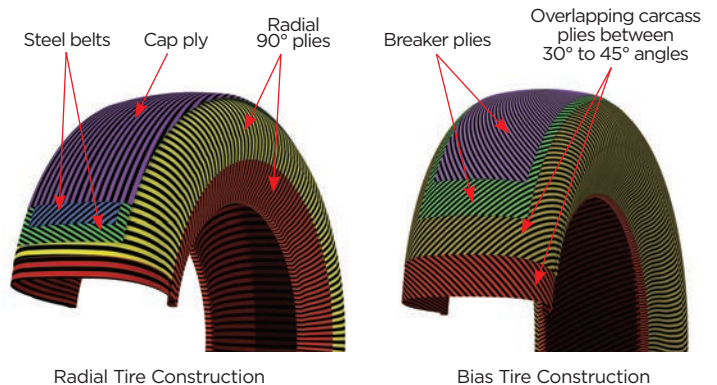
## UNDERSTANDING A TIRE SIDEWALL



**Tire Size: ST205/75R15** **LOAD RANGE C** **M**

A. B. C. D. E. F. G.

- A. Tire Type (ST = Special Trailer)
- B. Width of tire in millimeters
- C. Aspect Ratio (Ratio of height to width)
- D. Construction Type (R = Radial, D = Bias)
- E. Wheel diameter in inches
- F. Load index
- G. Speed rating

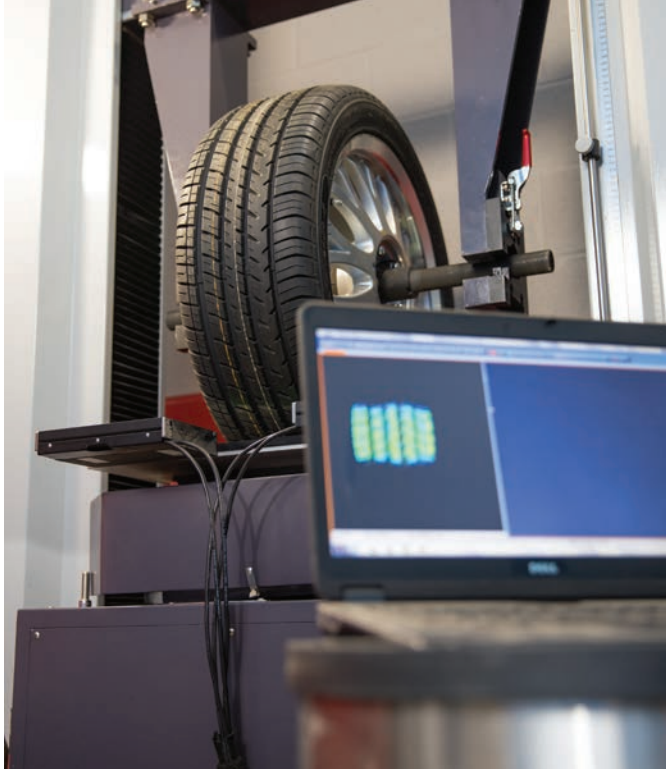


## RADIAL VS BIAS:

There are two types of trailer tires: Radial and Bias. A radial tire has steel belts that are oriented at a significantly different angle than the 90 degree radial plies. This allows the sidewall and tread to function as two independent features of the tire. A bias tire consists of multiple rubber plies over lapping each other at a 30-45 degree angle. The tread and sidewalls are interdependent because all plies have a consistent angle. The overlapped plies form a thick layer that is less flexible which makes it able to carry a heavier load and less trailer sway. You will typically have a smoother ride, lower noise, better handling and traction with a radial, which is why you find them exclusively on passenger cars.

Bias tires are typically used for local use: construction, agriculture or utility. Radial tires are often seen on longer distance trailers like RVs, marine and livestock trailers.





## TIRE TESTING & DEVELOPMENT

At KATC, we have specialized equipment that allows the engineering team to test a tire for endurance while still in the design phase. This helps assure a tire will perform to the expectations of the development team without ever having to build mold tooling or manufacture a tire. But testing does not end there...



**Some of the testing machinery is one of a kind and exists only at KATC.**

Once the mold is created to design specs, samples are built in one of Kenda's factories. The development team at the factory works closely with the engineers in Akron to design certify the tire. Only then, does a tire move into manufacturing but testing is still not over.



**Kenda tires are tested multiple times before a physical sample is ever made.**



**Kenda operates multiple technology centers and production facilities building tires for passenger, light truck, motorcycle, ATV/UTV, bicycle, wheel-chair, golf car as well as trailer tires.**



Kenda manufacturing facilities adhere to strict quality assurance standards and continually test to meet or exceed that quality. At the same time, KATC evaluates and conducts vehicle testing to ensure overall vehicle performance expectations are met. Using one of a kind equipment, we continually test tires for endurance, aged durability, ozone resistance, wear, spring rates, dimension accuracy, rolling resistance, uniformity, ride comfort, noise and more. With all that testing, you can be confident in the quality of a Kenda made tire.

**KENDA**  
**AMERICANA**  
TIRE AND WHEEL



# WHEELS

Kenda Americana Tire and Wheel purchases wheels from several top quality facilities including our key supplier, sister company, Dexstar Wheel.



**Dexstar Wheels in Elkhart Indiana is part of the Kenda family.**

Dexstar takes the highest quality American Made steel and builds some of the best quality wheels available today. Located in Elkhart, IN, Dexstar is ISO9001 certified. With automatic roll forming lines and wheel welders, Dexstar has the capacity to produce millions of wheels annually. With a fully automated e-coating / powder coating system and a pad printer, an unlimited amount of custom paint colors and striping options are available. Quality is job #1 and production is continually tested throughout the day. With a wide variety of styles and sizes from 12-17.5", Kenda Americana Tire and Wheel is proud to partner with our sister company, Dexstar to provide American made wheels to carry your marine, RV, utility and other towable trailers.



# ASSEMBLY



**Kenda ATW has multiple assembly and warehouse locations in the US.**

The final steps happen at one of Kenda ATW's U.S. based assembly plants. One of the most important parts of a tire/wheel assembly is the seal between the bead and the wheel. Our expert technicians use high speed mounting and inflation equipment to take our Kenda tires and expertly combine them with your choice of styles/colors of steel and aluminum wheels. Where appropriate, they can also bead balance each tire to ensure a smooth ride for your specific hauling needs.

With multiple warehouse facilities across the United States and a staff of friendly and dedicated customer service representatives, Kenda ATW can fill and ship all your orders on a timely basis. We continually upgrade our systems and facilities to best serve you.



**Kenda ATW carries you from design to delivery all within our family of companies.**

So let Kenda ATW carry the load for you. The KENDA ADVANTAGE takes you from design, development & testing through to manufacturing and finally to assembly and shipment. Working with Kenda ATW, you can have confidence in the tire assembly and be proud to put your company's name on the trailers you build.







# TRAILER TIRES



**All Kenda trailer tires exceed DOT standards and carry a 12 month Worry-Free Warranty.**



**Kenda owns multiple tire manufacturing facilities around the world.**

Part of the KENDA ADVANTAGE is that we design, engineer and manufacture the majority of our tires in company owned facilities.





shown on AM01 Gun Metal wheel



## KARRIER RADIAL KR03

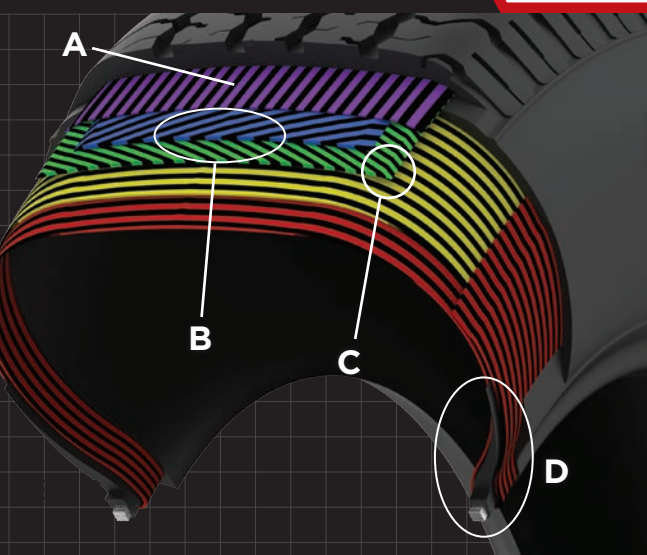
This premium all-season tire performs well in multiple trailer applications and offers stable, dependable handling – adding durability while enhancing overall performance. Its endurance tread compound formulation ensures consistency on all road surfaces. Plus, smart tread design provides reliable straight-line road grip without sacrificing control in cornering situations. And, well-designed shoulder blocks promotes the KR03's ability to wear evenly under trailer weight while reducing heat build. All features that strengthen the both the performance and value of towable, utility and RV platforms.

- Designed for improved handling and ride characteristics
- Radial construction disperses heat more efficiently

### SPECIFICATIONS

PART #	SIZE	PLY	S.W (INCH)	O.D. (INCH)	CAPACITY	MAX (PSI)	RIM (INCH)
10199	ST175/80R13	C	6.9	24.1	1375	50	13x5
10210	ST175/80R13	D	6.9	24.1	1650	70	13x5
10201	ST185/80R13	C	7.2	24.7	1480	50	13x4.5
10208	ST185/80R13	D	7.2	24.7	1710	65	13x3.5
10232	ST205/75R14	B	8.1	26.3	1430	35	14x5.5
10234	ST205/75R14	C	8.0	26.3	1925	60	14x5.5
10235	ST205/75R14	D	8.0	26.3	2200	75	14x5.5
10229	ST215/75R14	C	8.5	26.8	2200	75	14x6
10244	ST205/75R15	C	8.1	27.3	1820	50	15x5.5
10245	ST205/75R15	D	8.1	27.3	2200	65	15x5.5
10251	ST225/75R15	C	8.9	28.4	2150	50	15x6
10256	ST225/75R15	D	8.9	28.4	2540	65	15x6
10303	ST225/75R15	E	8.9	28.4	2860	80	15x6
10246	ST235/80R16	D	9.4	30.9	3000	65	16x6.5
10248	ST235/80R16	E	9.4	30.9	3500	90	16x6.5

## TECH BRIEF



### How Kenda's Engineers use Technical Design to Enhance Performance

- Reinforced cap ply material provide higher speed capabilities. The KR03 is M speed rated which means it's capable of being driven at speeds up to 81 MPH.
- Reinforced steel belts help increase rigidity of tread area to improve handling, stability, and sway resistance performance.
- Stiff belt edge rubber gum strips reinforces belt endings to provide superior endurance.
- Large bead filler provides excellent stability and sway resistance performance.





## KARRIER RADIAL KR35

Offering a smooth quiet ride, this high-quality mid-range trailer tire provides exceptional stability and excellent handling in all-season applications for confidence across weather conditions. Its silica infused tread compound increases ride control in wet weather supported by sipe angles and pitch count forcing water dispersion to reduce hydroplaning. Plus, its five rib design supports smooth, even wear across its tread footprint for extended mileage. KR35's special tread arc design provides optimal contact with road surfaces while maintaining its stable shape.

- Developed for stability, durability and water dispersion
- Excellent handling in off pavement situations and in all weather conditions

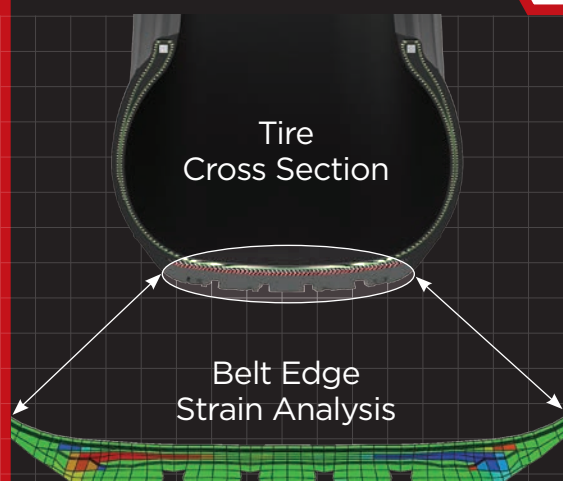
### SPECIFICATIONS

PART #	SIZE	PLY	S.W (INCH)	O.D. (INCH)	CAPACITY	MAX (PSI)	RIM (INCH)
10204	ST175/80R13	C	6.8	24.1	1375	50	13x5
10211	ST175/80R13	D	6.8	24.1	1650	70	13x5
10205	ST185/80R13	C	7.2	24.6	1447	50	13x5
10206	ST185/80R13	D	7.2	24.6	1709	65	13x5
10209	ST185/80R13	E	7.2	24.7	1925	80	13x5
10223	ST205/75R14	C	8.0	26.3	1925	60	14x5.5
10308	ST215/75R14	C	8.5	26.8	1870	50	14x5.5
10225	ST205/75R14	D	7.9	26.3	2200	75	14x5.5
10237	ST205/75R15	C	8.0	27.3	1820	50	15x5.5
10212	ST205/75R15	D	7.9	27.3	2200	65	15x5
10253	ST225/75R15	D	8.6	28.5	2540	65	15x6
10304	ST225/75R15	E	8.6	28.5	2860	50	15x6
10249	ST235/80R16	D	9.1	30.7	3000	65	16x6.5
10247	ST235/80R16	E	9.2	30.7	3500	90	16x6.5
10502	ST235/85R16	E	9.3	31.6	3640	95	16x6.5

shown on AMO4 Matte Black Machined wheel



## TECH BRIEF



### How Kenda Designs Tires to Increase Endurance

KATC focuses on **minimizing** "Belt Edge Strains" during the design process to increase the endurance of all Kenda tires under normal operating conditions.

- Belt edge strains significantly influences the endurance in the tread region of a tire. Two major factors that influence belt edge strains are tire design and operating conditions (inflation pressures, loads, speeds, alignment, etc).
- Kenda optimizes the design of each of its individual trailer tires to minimize belt ending strain levels under normal operating conditions to ensure maximum endurance capability. Proprietary development tools allow our engineers the ability to evaluate and minimizing belt edge strains during the development process to ensure our tires have the highest endurance

See [AmericanaTire.com](http://AmericanaTire.com) for current specifications





shown on AMO1 Black wheel



## KARRIER RADIAL S-TRAIL KR25

Like all tires in our Karrier series, the S-Trail features double steel belt, full nylon ply construction for a smooth, stable ride and less trailer sway at highway speeds. The computer-generated tread design in conjunction with a tread rubber compound provides superior traction and heat dispersal.

### SPECIFICATIONS

PART #	SIZE	PLY	S.W (INCH)	O.D. (INCH)	CAPACITY	MAX (PSI)	RIM (INCH)
10130	ST145R12	D	8	4	1220	65	12x4
10140	ST145R12	E	8	4	1520	80	12x4



shown on Type 19 wheel



## KARRIER RADIAL H/D KR18

With double steel belts and full nylon plies, the Karrier HD radial is designed for heavy-duty applications, increased tire life and a smooth ride. The computer-generated tread design in conjunction with our exclusive tread rubber compound provides superior traction and heat dispersal. Karrier radial tires are continually tested to ensure a smoother ride while providing additional stability at highway speeds.

### SPECIFICATIONS

PART #	SIZE	PLY	S.W (INCH)	O.D. (INCH)	CAPACITY	MAX (PSI)	RIM (INCH)
10500	ST235/85R16	E	9.3	31.6	3640	95	16x6.5
10501	ST235/85R16	F	9.3	31.6	3960	110	16x6.5







shown on Split Spoke Aluminum wheel



## KARRIER RADIAL H/D KR17

### SPECIFICATIONS

PART #	SIZE	PLY	S.W (INCH)	O.D. (INCH)	CAPACITY	MAX (PSI)
10316	ST215/65R17	C	8.5	28.0	1874	50



shown on AM03 Gun Metal Aluminum wheel



## KR28

### SPECIFICATIONS

PART #	SIZE	PLY	S.W (INCH)	O.D. (INCH)	CAPACITY	MAX (PSI)
280059	LT235/75R15	D	9.3	28.8	2335	65



shown on 7 Star Aluminum wheel



## KR29

### SPECIFICATIONS

PART #	SIZE	PLY	S.W (INCH)	O.D. (INCH)	CAPACITY	MAX (PSI)
10294	LT235/75R15	C	9.3	28	1985	50
290038	LT235/75R15	D	9.3	29	2337	65

## ADDITIONAL HEAVY DUTY RADIALS



### SPECIFICATIONS

PART #	SIZE	PLY	S.W (INCH)	O.D. (INCH)	CAPACITY	MAX (PSI)	RIM (INCH)
10503	ST235/75 R16	G	9.0	30.0	4080	110	16 x 6
10285	LT215/75 R17.5	H	8.3	30.2	4805	125	17.5 x 6.75
10305	LT235/75 R17.5	H	9.2	31.4	6008	125	17.5 x 6.75



# TRAILER TIRES



shown on Mod Silver wheel



## LOADSTAR BIAS K550

With the low rolling resistance design of the Kenda Loadstar K550, you'll enjoy improved handling and enhanced ride characteristics of your towed vehicle. The Loadstar K550 provides dependable and durable bias-ply construction with the great looks of a radial tire. These tires are continually tested to ensure that they exceed the Department of Transportation requirements.

- Advanced rubber compound gives longer tread wear and low rolling resistance.
- Tread profile design allows for increased towing stability

### SPECIFICATIONS

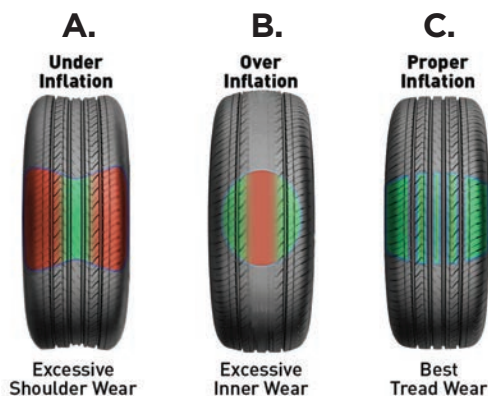
PART #	SIZE	PLY	S.W (INCH)	O.D. (INCH)	CAPACITY	MAX (PSI)	RIM (INCH)
1ST73	ST155/80D13	C	6.3	23.0	1100	50	13x4.5
1ST74	ST175/80D13	B	6.8	24.0	1100	35	13x4
1ST76	ST175/80D13	C	6.8	24.0	1360	50	13x4
1ST77	ST175/80D13	D	6.8	24.0	1610	65	13x4
1ST82	ST185/80D13	C	7.2	24.4	1480	50	13x5
1ST79	ST185/80D13	D	7.2	24.4	1710	65	13x5
1ST84	ST205/75D14	B	7.8	26.3	1430	35	14x5.5
1ST86	ST205/75D14	C	7.8	26.3	1760	50	14x5.5
1ST93	ST205/75D14	D	7.8	26.3	2040	65	14x5.5
1ST90	ST215/75D14	C	8.4	26.6	1870	50	14x6
1ST91	ST205/75D15	B	7.8	27.4	1480	35	15x5.5
1ST92	ST205/75D15	C	7.8	27.4	1820	50	15x5.5
1ST95	ST205/75D15	D	7.8	27.4	2150	65	15x5.5
1ST94	ST225/75D15	C	8.6	28.1	2150	50	15x6
1ST96	ST225/75D15	D	8.6	28.1	2540	65	15x6
1ST97	ST225/75D15	E	8.6	28.1	2960	80	15x6

## TECH BRIEF

### How Inflation Pressure Influences Tire Wear

Maintaining proper inflation pressures in your trailer tires is crucial to maintaining even and slow rates of wear.

- Underinflated or overloaded tires may cause rapid shoulder wear. The tire may also experience endurance issues due to excessive heat buildup in the shoulder if used in this state for long periods of time.
- Over inflation will cause rapid center wear. In addition, an over inflated tire may cause harsh ride comfort and loss of traction due to a smaller contact area of the tire with the road.
- Properly inflating your tires to the manufacturer's recommended inflation pressure will provide the most optimum conditions for maximizing endurance, traction and ride comfort.







shown on Spoke White with Stripe wheel



## ST BIAS K558

### SPECIFICATIONS

PART #	SIZE	PLY	S.W (INCH)	O.D. (INCH)	CAPACITY	MAX (PSI)	RIM (INCH)
1ST51	ST175/80D13	C	6.6	24.0	1360	50	13x5
1ST52	ST205/75D14	C	7.8	26.3	1760	50	14x5.5
1ST54	ST205/75D15	C	7.7	27.4	1820	50	15x5.5
1ST58	ST225/75D15	D	8.6	28.3	2540	65	15x6



shown on Solid Center Silver wheel



**8"-10" WIDE PROFILE**

## LOADSTAR BIAS WIDE K399

### SPECIFICATIONS

PART #	SIZE	PLY	S.W (INCH)	O.D. (INCH)	CAPACITY	MAX (PSI)	RIM (INCH)	SPEED RATING
1HP20	165/65-8	B	6.6	16.7	616	45	8x5.375	M
1HP22	165/65-8	C	6.6	16.5	803	70	8x5.375	J
1HP24	215/60-8	B	8.9	18.4	780	36	8x7	M
1HP26	215/60-8	C	8.9	18.3	935	50	8x7	M
1HP28	215/60-8	D	8.9	18.3	1166	70	8x7	M
1HP50	205/65-10	B	8.3	20.8	906	36	10x6	J
1HP52	205/65-10	C	8.3	20.5	1100	50	10x6	M
1HP54	205/65-10	D	8.3	20.6	1320	70	10x6	M
1HP56	205/65-10	E	8.4	20.4	1650	89	10x6	N
1HP58	205/65-10	F	8.2	20.6	1765	105	10x6	-
1HP60	225/55B12	E	8.9	21.8	2464	100	12x7AG	J

SIZE	REPLACEMENT FOR
165/65-8	16.5x6.50-8
215/60-8	18.5x8.50-8
205/65-10	20.5x8.00-10





shown on Spoke White with Stripe wheel



## LOADSTAR BIAS K353

### SPECIFICATIONS

PART #	SIZE	PLY	S.W (INCH)	O.D. (INCH)	CAPACITY	MAX (PSI)	RIM (INCH)
10010	570-8	B	5.8	18.0	715	50	8x3.75
10012	570-8	C	5.9	18.0	913	75	8x3.75
10013	570-8	D	5.5	18	1078	49	8x3.75
10060	480-12	B	4.8	20.5	781	60	12x4
10062	480-12	C	4.8	20.5	990	89	12x4
10064	530-12	B	5.6	21.9	836	55	12x4.25
10066	530-12	C	5.6	21.9	1045	80	12x4.25
10068	530-12	D	5.5	21.9	1243	105	12x4.25



shown on Directional Chrome wheel



## LOADSTAR BIAS K364

### SPECIFICATIONS

PART #	SIZE	PLY	S.W (INCH)	O.D. (INCH)	CAPACITY	MAX (PSI)	RIM (INCH)
10040	6.90/6.00-9	C	6.5	21.1	1298	60	9x4.5



shown on Solid Center Galvanized wheel



## LOADSTAR BIAS K371

### SPECIFICATIONS

PART #	SIZE	PLY	S.W (INCH)	O.D. (INCH)	CAPACITY	MAX (PSI)	RIM (INCH)
10002	4.80/4.00-8	B	4.6	16.1	594	60	8x3.75
10004	4.80/ 4.00-8	C	4.7	16.1	748	89	8x3.75





## LOADSTAR BIAS K397

### SPECIFICATIONS

PART #	SIZE	PLY	S.W. (INCH)	O.D. (INCH)	CAPACITY	MAX (PSI)	RIM (INCH)
10014	5.70-8	B	5.8	18.4	715	50	8x3.75

shown on Conventional Black wheel



## LIGHT TRUCK K370

### SPECIFICATIONS

PART #	K#	SIZE	PLY	S.W. (INCH)	O.D. (INCH)	CAPACITY	MAX (PSI)	RIM (INCH)
10414	K391M	7.00-15 LT	E	7.8	29.5	2403	71	15x5.5
10333	K391M	8-14.5 LT	F	8.0	27.8	2835	100	14.5x6
10310	K370	7-14.5 LT	D	7.2	26.1	1870	70	14.5x6
10312	K370	7-14.5 LT	E	7.2	26.1	2090	85	14.5x6
10315	K370	7-14.5 LT	F	7.2	26.1	2335	100	14.5x6

K370

shown on  
AM03 Black Machined wheel







# STEEL WHEELS



**Dexstar Wheels in Elkhart, IN USA is a Kenda company.**

Our sister company, Dexstar is a key supplier of our steel wheels;  
another part of the KENDA ADVANTAGE.





## 13"-15" DIRECTIONAL (W/O Rivets)

### SPECIFICATIONS

SILVER	CHROME	GALVANIZED	RIM SIZE	BOLT CIRCLE	PILOT	CAPACITY
20259	20263	20264	13 x 4.5	5-4.5	3.19	1480
20377	20372	20379	14 x 5.5	5-4.5	3.19	1870
20380	20378	20382	14 x 6	5-4.5	3.19	1870
20447	20450	20451	15 x 5	5-4.5	3.19	2150
20563	20564	20566	15 x 6	5-4.5	3.19	2150
20579	20581	20582	15 x 6	6-5.5	4.27	2600



## 12"-16" MOD

### SPECIFICATIONS

WHITE W/STRIPE	WHITE W/O STRIPES	GALVANIZED	CHROME	SILVER	BLACK	RIM SIZE	BOLT CIRCLE	PILOT	OFFSET	CAPACITY LBS
20137	20140	20139	20162	-	20155	12x4JA	4-4	2.84	0	1250
20142	20151	20144	20152	20147	20153	12x4JA	5-4.5	3.19	0	1250
20149	-	20167 HD	-	20165	20168	12x4JA	5-4.5	3.19	.50 out	1520
20236	20250	20246	-	-	20242	13x4.5JJ	4-4	2.65	0	1660
20252	20253	20254	20249	20244	20245	13x4.5JJ	5-4.5	3.19	0	1725
20362	20365	20364	20368	20363	20315	14x5.5JJ	5-4.5	3.19	0	2200
20442	20443	20444	20441	20436	20440	15x5JJ	5-4.5	3.19	0	2200
20446	20439	-	-	20427	20438	15x5JJ	5-5	3.19	0	2150
20543	20551	20544	20557	20537	20545	15x6JJ	5-4.5	3.19	0	2150
20553	20552	20554	20558	20539	20560	15x6JJ	6-5.5	4.27	0	2860
20748	20742	20744	20788	20746	20757	16x6K	6-5.5	4.27	0	3050
20795	20759	-	-	-	-	16x6K	8-6.5	4.90	.50 IN	3750
20761	20762	20761G	20791	20760	20761B	16x6K	8-6.5	4.90	0	3750
20785	20789	20785G	-	20794	20799	16x6K	8-6.5	4.90	0	4400
-	20793	-	-	-	-	16x6K	8-6.5	4.90	.50 IN	4400

*Inset = Positive [+ ] moves tire towards the centerline of the trailer.*

*Outset = Negative [- ] moves tire away from centerline of trailer.*

*\*Painted wheels have e-coat and powder coat finish for a long lasting finish.*

# STEEL TRAILER WHEELS



## 12"- 16" Spoke

### SPECIFICATIONS

WHITE W/STRIPES	WHITE W/O STRIPES	GALVANIZED	CHROME	SILVER	BLACK	RIM SIZE	BOLT CIRCLE	PILOT	CAPACITY LBS
20122	20123	20124	20128	-	-	12x4JA	4-4	2.84	1250
20132	20131	20134	-	20135	20138	12x4JA	5-4.5	3.19	1250
20222	20223	20224	-	20225	-	13x4.5JJ	4-4	2.65	1660
20232	20231	20234	20216	20233	20235	13x4.5JJ	5-4.5	3.19	1660
20352	20351	-	-	20302	20353	14x5.5JJ	5-4.5	3.19	2200
20373	-	20354	20355	20349	-	14x6	5-4.5	3.19	1870
20422	20421	20423	-	20424	20426	15x5JJ	5-4.5	3.19	2150
20428	-	-	-	-	-	15x5JJ	5-5	3.19	2150
20522	20521	20524	20684	20519	20527	15x6JJ	5-4.5	3.19	2200
20528	20525	-	-	-	-	15x6JJ	5-5	3.19	2150
20532	20531	20534	20683	20535	20561	15x6JJ	6-5.5	4.27	2860
20740	20741	20747	-	-	20741B	16x6K	6-5.5	4.27	3050
20751	20750	20781	20775	20776	20773	16x6K	8-6.5	4.90	3750
20726	20725	20723	-	-	-	16.5x6.75	8-6.5	4.90	3530
20769	20768	20781HD	-	20767	-	16x6HD	8-6.5	4.90	4100



## 13"-16" Conventional

### SPECIFICATIONS

BLACK	WHITE	GALVANIZED	SILVER	RIM SIZE	BOLT CIRCLE	PILOT	OFFSET	CAPACITY LBS
20214	20212	20213	-	13x4.5JJ	5-4.5	2.62	.50 IN	1480
20304	20334	-	-	14x5.5JJ	5-4.5	2.62	.50 IN	1870
20504	20412	20505	-	15x6JJ	5-4.5	2.62	.50 IN	1820
20404	-	-	-	15x5K	5-4.5	2.62	.50 IN	1820
20514	-	20513	-	15x6JJ	6-5.5	3.65	0	2600
20758	-	-	20749	16x6K	6-5.5	3.65	0	3050
20766	-	20707	-	16x6K	8-6.5	4.89	.50 IN	3750
20772	-	20713	-	16x6K	8-6.5	4.89	.50 IN	4400







## 8" - 13" SOLID CENTER

### SPECIFICATIONS

WHITE	GALVANIZED	CHROME	SILVER	BLACK	RIM SIZE	BOLT CIRCLE	PILOT	CAPACITY LBS
20001	20003	20002	20009	20036	8x3.75	4-4	2.5	900
20006	20008	20004	20007	-	8x3.75	5-4.5	2.81	900
20011	20013	-	-	-	8x5.375	4-4	2.5	900
20016	20018	-	20017	-	8x5.375	5-4.5	2.81	900
20021	20023	20033	20019	-	8x7	4-4	2.5	900
20026	20028	-	20027	-	8x7	5-4.5	2.81	900
20041	20043	20052	20042	20044	10x6	4-4	2.5	1725
20046	20048	20050	20047	20056	10x6	5-4.5	2.81	1650
20053	-	-	-	-	10x6	5-5.5	4.00	1800*
20102	-	-	-	-	12x4	4-4	2.84	1250
20112	-	-	-	-	12x4	5-4.5	3.19	1250
-	-	-	-	20205	13x4.5JJ	4-4	2.65	1660
20204	-	-	-	20209	13x4.5	5-4.5	3.19	1660



## 17.5" x 6.75" HUB PILOTED SINGLE SOLID CENTER

### SPECIFICATIONS

BLACK	WHITE	GRAY	GALVANIZED	BOLT CIRCLE	PILOT	OFFSET	CAPACITY LBS
-	-	20739	-	8-6.5	4.75	0.19 in	4805
-	-	22437	22439	8-6.5	4.76	0.50 out	6005
22440	-	20736	22444	8-6.5	4.76	0.19 in	6005
-	22438	-	-	8-6.5	4.76	0.50 out	6005
2298T	-	22704	-	8-6.5	4.75	0.50 out	6005
-	-	22703	-	8-6.5	4.75	0.31 out	4805
-	-	22452	22454	8-6.5	4.76	0.31 out	6005



## 14.5" x 6" STUD PILOTED SOLID CENTER

### SPECIFICATIONS

WHITE	BOLT CIRCLE	PILOT	OFFSET	CAPACITY LBS
20308	8-6.5	4.75	0.5 out	4805

*Inset = Positive [+ ] moves tire towards the centerline of the trailer.*

*Outset = Negative [- ] moves tire away from centerline of trailer.*

*\*Painted wheels have e-coat and powder coat finish for a long lasting finish.*

# STEEL TRAILER WHEELS



## 17.5" x 6.75" HUB PILOTED SINGLE

### SPECIFICATIONS

#### W/8 MOD HAND HOLES

WHITE	SILVER	BOLT CIRCLE	PILOT	OFFSET	CAPACITY LBS
22463	22461	8-6.5	4.76	0.50 out	6005



## 17.5" x 6.75" HUB PILOTED DUAL

### SPECIFICATIONS

#### W/2 OVAL HAND HOLES

BLACK	WHITE	SILVER	BOLT CIRCLE	PILOT	OFFSET	CAPACITY LBS
22464	22467	22465	8-6.5	4.76	5.59 in	6200

#### W/2 MOD HAND HOLES

WHITE	BOLT CIRCLE	PILOT	OFFSET	CAPACITY LBS
22428	8-10.8	8.70	5.59 in	6200

#### W/4 MOD HAND HOLES

WHITE	GRAY	GALVANIZED	BOLT CIRCLE	PILOT	OFFSET	CAPACITY LBS
22707	22412	22414	8-10.8	8.70	5.59 in	6200

*Inset = Positive [+] moves tire towards the centerline of the trailer.*

*Outset = Negative [-] moves tire away from centerline of trailer.*

*\*Painted wheels have e-coat and powder coat finish for a long lasting finish.*



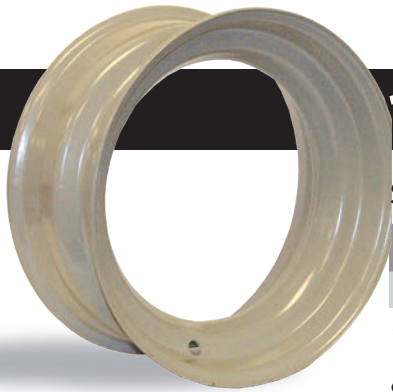




## DUAL WHEELS

### SPECIFICATIONS

GRAY E-COAT	WHITE	SILVER	RIM SIZE	BOLT CIRCLE	PILOT	OFFSET	CAPACITY LBS
20805	-	-	14.5x7	8-6.5	4.75	5.65 out	3100
20777	-	-	16x6K	8-6.5	4.88	5.5 out	3500
-	20771	20798	16x6K	8-6.5	4.75	5.5 out	3200
20783	-	20779	16x6K	8-6.5	4.77	5.5 out	3500
20730	-	-	16.5x6.75	8-6.5	4.75	5.5 out	3100
20714	-	-	16.5x6.75	8-6.5	4.88	5.5 out	3500



## 14.5" MOBILE HOME RIMS

### SPECIFICATIONS: STANDARD

E-COAT GRAY	RIM SIZE	MOUNTING	CAPACITY
20800	14.5x6 MH	rim clamps	3100

*rim is not to be remounted*

### SPECIFICATIONS: DEMOUNTABLE

E-COAT GRAY	RIM SIZE	MOUNTING	CAPACITY
20802	14.5x6 MH	rim clamps	3050

*Inset = Positive [+] moves tire towards the centerline of the trailer.*

*Outset = Negative [-] moves tire away from centerline of trailer.*

## POWDER COAT PAINT COLORS

Steel wheels are available in multiple stock colors like red, blue, orange or teal. Looking for something unique? Speak to your account manager for custom colors, stripes, textures and more.







# ALUMINUM WHEELS



**Alloy, Aluminum and Aluminum Alloy are all different names for the same type of wheel.**  
Make your RV or towable trailer really stand out with our large assortment of exclusive and branded aluminum wheels.





## AM01 SERIES ALUMINUM WHEELS

Part #	Description	Wheel Size	Lug Hole Pattern	Pilot (Center) Hole Dia.	Max Load (lbs)	Wheel Weight (lbs)
<b>AM01 Silver Machined</b>						
23001	12x4 5H	12x4	5x4.5	3.19"	1520	9.92
23002	13x4.5 5H	13x4.5	5x4.5	3.19"	1740	11.80
23003	14x5.5 5H	14x5.5	5x4.5	3.19"	2150	14.33
23004	15x6 5H	15x6	5x4.5	3.19"	2540	16.87
23005	15x6 6H	15x6	6x5.5	3.75"	2960	17.53
23006	16x6.5 6H	16x6.5	6x5.5	3.75"	3580	20.61
23007	16x6.5 8H	16x6.5	8x6.5	4.90"	3960	22.05
<b>AM01 Black Machined</b>						
23008	12x4 5H	12x4	5x4.5	3.19"	1520	9.92
23009	13x4.5 5H	13x4.5	5x4.5	3.19"	1740	11.80
23010	14x5.5 5H	14x5.5	5x4.5	3.19"	2150	14.33
23011	15x6 5H	15x6	5x4.5	3.19"	2540	16.87
23012	15x6 6H	15x6	6x5.5	3.75"	2960	17.53
23013	16x6.5 6H	16x6.5	6x5.5	3.75"	3580	20.61
23014	16x6.5 8H	16x6.5	8x6.5	4.90"	3960	22.05
<b>AM01 Gun Metal Gray Machined</b>						
23015	12x4 5H	12x4	5x4.5	3.19"	1520	9.92
23016	13x4.5 5H	13x4.5	5x4.5	3.19"	1740	11.80
23017	14x5.5	14x5.5	5x4.5	3.19"	2150	14.33
23018	15x6 5H	15x6	5x4.5	3.19"	2540	16.87
23019	15x6 6H	15x6	6x5.5	3.75"	2960	17.53
23020	16x6.5 6H	16x6.5	6x5.5	3.75"	3580	20.61
23021	16x6.5 8H	16x6.5	8x6.5	4.90"	3960	22.05
<b>AM01 All Black</b>						
23022	12x4 5H	12x4	5x4.5	3.19"	1520	9.92
23023	13x4.5 5H	13x4.5	5x4.5	3.19"	1740	11.80
23024	14x5.5 5H	14x5.5	5x4.5	3.19"	2150	14.33
23025	15x6 5H	15x6	5x4.5	3.19"	2540	16.87
23026	15x6 6H	15x6	6x5.5	3.75"	2960	17.53
23027	16x6.5 6H	16x6.5	6x5.5	3.75"	3580	20.61
23028	16x6.5 8H	16x6.5	8x6.5	4.90"	3960	22.05



## AM04 SERIES ALUMINUM WHEELS

Part #	Description	Wheel Size	Lug Hole Pattern	Pilot (Center) Hole Dia.	Max Load (lbs)	Wheel Weight (lbs)
<b>AM04 Silver</b>						
24101	14x5.5 5H-4.5	14x5.5	5x4.5	3.19"	2150	14.59
24111	15x5 5H-4.5	15x5	5x4.5	3.19"	2200	17.04
24121	15x6 6H-5.5	15x6	6x5.5	3.74"	2960	19.29
24131	16x6 8H-6.5	16x6	8x6.5	4.90"	4400	23.37
24141	17.5x6.75 8H-6.5	17.5x6.75	8x6.5	4.77"	6005	34.72
<b>AM04 Black</b>						
24102	14x5.5 5H-4.5	14x5.5	5x4.5	3.19"	2150	14.59
24112	15x5 5H-4.5	15x5	5x4.5	3.19"	2200	17.04
24122	15x6 6H-5.5	15x6	6x5.5	3.74"	2960	19.29
24132	16x6 8H-6.5	16x6	8x6.5	4.90"	4400	23.37
24142	17.5x6.75 8H-6.5	17.5x6.75	8x6.5	4.77"	6005	34.72





*Available in 7 Colors/Finishes*

## AM04 SERIES ALUMINUM WHEELS

Part #	Description	Wheel Size	Lug Hole Pattern	Pilot (Center) Hole Dia.	Max Load (lbs)	Wheel Weight (lbs)
<b>AM04 Matte Black Machined</b>						
24107	14x5.5 5H-4.5	14x5.5	5x4.5	3.19"	2150	14.59
24117	15x5 5H-4.5	15x5	5x4.5	3.19"	2200	17.04
24128	15x6 6H-5.5	15x6	6x5.5	3.74"	2960	19.29
24137	16x6 8H-6.5	16x6	8x6.5	4.90"	4400	23.37
<b>AM04 Black Machined</b>						
24103	14x5.5 5H-4.5	14x5.5	5x4.5	3.19"	2150	14.59
24113	15x5 5H-4.5	15x5	5x4.5	3.19"	2200	17.04
24123	15x6 6H-5.5	15x6	6x5.5	3.74"	2960	19.29
24133	16x6 8H-6.5	16x6	8x6.5	4.90"	4400	23.37
24143	17.5x6.75 8H-6.5	17.5x6.75	8x6.5	4.77"	6005	34.72
<b>AM04 Gun Metal</b>						
24104	14x5.5 5H-4.5	14x5.5	5x4.5	3.19"	2150	14.59
24114	15x5 5H-4.5	15x5	5x4.5	3.19"	2200	17.04
24124	15x6 6H-5.5	15x6	6x5.5	3.74"	2960	19.29
24134	16x6 8H-6.5	16x6	8x6.5	4.90"	4400	23.37
24144	17.5x6.75 8H-6.5	17.5x6.75	8x6.5	4.77"	6005	34.72
<b>AM04 PVD Chrome</b>						
24105	14x5.5 5H-4.5	14x5.5	5x4.5	3.19"	2150	14.59
24115	15x5 5H-4.5	15x5	5x4.5	3.19"	2200	17.04
24125	15x6 6H-5.5	15x6	6x5.5	3.74"	2960	19.29
24135	16x6 8H-6.5	16x6	8x6.5	4.90"	4400	23.37
24145	17.5x6.75 8H-6.5	17.5x6.75	8x6.5	4.77"	6005	34.72
<b>AM04 BPVD Black</b>						
24106	14x5.5 5H-4.5	14x5.5	5x4.5	3.19"	2150	14.59
24116	15x5 5H-4.5	15x5	5x4.5	3.19"	2200	17.04
24126	15x6 6H-5.5	15x6	6x5.5	3.74"	2960	19.29
24136	16x6 8H-6.5	16x6	8x6.5	4.90"	4400	23.37
24146	17.5x6.75 8H-6.5	17.5x6.75	8x6.5	4.77"	6005	34.72



Available in 8 Colors/Finishes

## AM03 SERIES ALUMINUM WHEELS

Part #	Description	Wheel Size	Lug Hole Pattern	Pilot (Center) Hole Dia.	Max Load (lbs)	Wheel Weight (lbs)
<b>AM03 Matte Black</b>						
23155	13x4.5 5H-4.5	13x4.5	5x4.5	3.19"	1740	12.21
23107	14x5.5 5H-4.5	14x5.5	5x4.5	3.19"	2200	14.59
23117	15x5 5H-4.5	15x5	5x4.5	3.19"	2200	16.34
23127	15x6 6H-5.5	15x6	6x5.5	3.74"	2960	18.52
23137	16x6 8H-6.5	16x6	8x6.5	4.90"	4400	23.57
<b>AM03 Matte Black Machined</b>						
23156	14x4.5 5H-4.5	13x4.5	5x4.5	3.19"	1740	12.21
23108	14x5.5 5H-4.5	14x5.5	5x4.5	3.19"	2200	14.59
23118	15x5 5H-4.5	15x5	5x4.5	3.19"	2200	16.34
23128	15x6 6H-5.5	15x6	6x5.5	3.74"	2960	18.52
23138	16x6 8H-6.5	16x6	8x6.5	4.90"	4400	23.57
<b>AM03 Black Machined</b>						
23153	13x4.5 5H-4.5	13x4.5	5x4.5	3.19"	1740	12.21
23103	14x5.5 5H-4.5	14x5.5	5x4.5	3.19"	2200	14.59
23113	15x5 5H-4.5	15x5	5x4.5	3.19"	2200	16.34
23123	15x6 6H-5.5	15x6	6x5.5	3.74"	2960	18.52
23133	16x6 8H-6.5	16x6	8x6.5	4.90"	4400	23.57
23143	17.5x6.75 8H-6.5	16x6	8x6.5	4.90"	4400	23.57
<b>AM03 Gun Metal</b>						
23154	13x4.5 5H-4.5	13x4.5	5x4.5	3.19"	1740	12.21
23104	14x5.5 5H-4.5	14x5.5	5x4.5	3.19"	2200	14.59
23114	15x5 5H-4.5	15x5	5x4.5	3.19"	2200	16.34
23124	15x6 6H-5.5	15x6	6x5.5	3.74"	2960	18.52
23134	16x6 8H-6.5	16x6	8x6.5	4.90"	4400	23.57
23144	17.5x6.75 8H-6.5	17.5x6.75	8x6.5	4.77"	6005	30.86



# AM03 SERIES ALUMINUM WHEELS

Part #	Description	Wheel Size	Lug Hole Pattern	Pilot (Center) Hole Dia.	Max Load (lbs)	Wheel Weight (lbs)
<b>AM03 Silver</b>						
23151	13x4.5 5H-4.5	13x4.5	5x4.5	3.19"	1740	12.21
23101	14x5.5 5H-4.5	14x5.5	5x4.5	3.19"	2200	14.59
23111	15x5 5H-4.5	15x5	5x4.5	3.19"	2200	16.34
23121	15x6 6H-5.5	15x6	6x5.5	3.74"	2960	18.52
23131	16x6 8H-6.5	16x6	8x6.5	4.90"	4400	23.57
23141	17.5x6.75 8H-6.5	17.5x6.75	8x6.5	4.77"	6005	30.86
<b>AM03 Black</b>						
23152	13x4.5 5H-4.5	13x4.5	5x4.5	3.19"	1740	12.21
23102	14x5.5 5H-4.5	14x5.5	5x4.5	3.19"	2200	14.59
23112	15x5 5H-4.5	15x5	5x4.5	3.19"	2200	16.34
23122	15x6 6H-5.5	15x6	6x5.5	3.74"	2960	18.52
23132	16x6 8H-6.5	16x6	8x6.5	4.90"	4400	23.57
23142	17.5x6.75 6H-5.5	17.5x6.75	6x6.5	4.77"	6005	30.86
<b>AM03 PVD Chrome</b>						
23157	13x4.5 5H-4.5	13x4.5	5x4.5	3.19"	1740	12.21
23105	14x5.5 5H-4.5	14x5.5	5x4.5	3.19"	2200	14.59
23115	15x5 5H-4.5	15x5	5x4.5	3.19"	2200	16.34
23125	15x6 6H-5.5	15x6	6x5.5	3.74"	2960	18.52
23135	16x6 8H-6.5	16x6	8x6.5	4.90"	4400	23.57
23145	17.5x6.75 8H-6.5	16x6	8x6.5	4.90"	4400	23.57
<b>AM03 BPVD Black</b>						
23158	13x4.5 5H-4.5	13x4.5	5x4.5	3.19"	1740	12.21
23106	14x5.5 5H-4.5	14x5.5	5x4.5	3.19"	2200	14.59
23116	15x5 5H-4.5	15x5	5x4.5	3.19"	2200	16.34
23126	15x6 6H-5.5	15x6	6x5.5	3.74"	2960	18.52
23136	16x6 8H-6.5	16x6	8x6.5	4.90"	4400	23.57





## AM02 SERIES ALUMINUM WHEELS

Part #	Description	Wheel Size	Lug Hole Pattern	Pilot (Center) Hole Dia.	Max Load (lbs)	Wheel Weight (lbs)
<b>AM02 Silver Machined</b>						
24001	12x4 5H	12x4	5x4.5	3.19"	1520	8.80
24002	13x4.5 5H	13x4.5	5x4.5	3.19"	1740	10.10
24003	14x5.5 5H	14x5.5	5x4.5	3.19"	2150	13.40
24004	15x6 5H	15x6	5x4.5	3.19"	2540	15.50
24005	15x6 6H	15x6	6x5.5	3.75"	2960	17.30
24006	16x6.5 6H	16x6.5	6x5.5	3.75"	3580	18.60
24007	16x6.5 8H	16x6.5	8x6.5	4.90"	3960	20.20
<b>AM02 Black Machined</b>						
24008	12x4 5H	12x4	5x4.5	3.19"	1520	8.80
24009	13x4.5 5H	13x4.5	5x4.5	3.19"	1740	10.10
24010	14x5.5 5H	14x5.5	5x4.5	3.19"	2150	13.40
24011	15x6 5H	15x6	5x4.5	3.19"	2540	15.50
24012	15x6 6H	15x6	6x5.5	3.75"	2960	17.30
24013	16x6.5 6H	16x6.5	6x5.5	3.75"	3580	18.60
24014	16x6.5 8H	16x6.5	8x6.5	4.90"	3960	20.20
<b>AM02 Gun Metal Gray Machined</b>						
24015	12x4 5H	12x4	5x4.5	3.19"	1520	8.80
24016	13x4.5 5H	13x4.5	5x4.5	3.19"	1740	10.10
24017	14x5.5 5H	14x5.5	5x4.5	3.19"	2150	13.40
24018	15x6 5H	15x6	5x4.5	3.19"	2540	15.50
24019	15x6 6H	15x6	6x5.5	3.75"	2960	17.30
24020	16x6.5 6H	16x6.5	6x5.5	3.75"	3580	18.60
24021	16x6.5 8H	16x6.5	8x6.5	4.90"	3960	20.20
<b>AM02 All Black</b>						
24022	12x4 5H	12x4	5x4.5	3.19"	1520	8.80
24023	13x4.5 5H	13x4.5	5x4.5	3.19"	1740	10.10
24024	14x5.5 5H	14x5.5	5x4.5	3.19"	2150	13.40
24025	15x6 5H	15x6	5x4.5	3.19"	2540	15.50
24026	15x6 6H	15x6	6x5.5	3.75"	2960	17.30
24027	16x6.5 6H	16x6.5	6x5.5	3.75"	3580	18.60
24028	16x6.5 8H	16x6.5	8x6.5	4.90"	3960	20.20





## Hi-SPEC Series 6

### SPECIFICATIONS

PART #	DESCRIPTION	BOLT PATTERN	BORE SIZE	LOAD RATING	RIM CONTOUR	WEIGHT
20281	13X5 5H ALUM SILVER	5 x 4.5	3.19"	1660 lbs	J	14
20281B	13X5 5H ALUM BLACK	5 x 4.5	3.19"	1660 lbs	J	14
22328	14X5.5 5H ALUM SILVER	5 x 4.5	3.19"	1900 lbs	J	15
22328B	14X5.5 5H ALUM BLACK	5 x 4.5	3.19"	1900 lbs	J	15
20455	15X5 5H ALUM SILVER	5 x 4.5	3.19"	1820 lbs	J	20
20455B	15X5 5H ALUM BLACK	5 x 4.5	3.19"	1820 lbs	J	20
22651	15X6 5H ALUM SILVER	5 x 4.5	3.19"	2150 lbs	J	20
22651B	15X6 5H ALUM BLACK	6 x 5.5	3.19"	2150 lbs	J	20
22652	15X6 6H ALUM SILVER	6 x 5.5	4.25"	2830 lbs	J	20
22652B	15X6 6H ALUM BLACK	6 x 5.5	4.25"	2830 lbs	J	20
22698	16X7 6H ALUM SILVER	6 x 5.5	4.25"	2830 lbs	J	23
22698B	16X7 6H ALUM BLACK	6 x 5.5	4.25"	3200 lbs	J	23
22697	16X7 8H ALUM SILVER	8 x 6.5	5.15"	3200 lbs	J	25
22699	16X7 HD 8H ALUM SILVER	8 x 6.5	4.90"	3960 lbs	J	25
22699B	16X7 HD 8H ALUM BLACK	8 x 6.5	4.90"	3960 lbs	J	25



## Hi-SPEC Series 7

### SPECIFICATIONS

PART #	DESCRIPTION	BOLT PATTERN	BORE SIZE	LOAD RATING	RIM CONTOUR	WEIGHT
20452	12X4 5H ALUM GUN METAL GRAY	5 x 4.5	3.19"	1520 lbs	J	9
20454	14X5.5 5H ALUM GUN METAL GRAY	5 x 4.5	3.19"	1900 lbs	J	14
20456	15X5 5H ALUM GUN METAL GRAY	5 x 4.5	3.19"	2150 lbs	J	19
20456B	15X5 5H ALUM SILVER W/BLACK INSET	5 x 4.5	3.19"	2150 lbs	J	19
20458	15x6 6H ALUM SILVER	6 x 5.5	4.25"	2830 lbs	J	19
20458B	15x6 6H ALUM BLACK	6 x 5.5	4.25"	2830 lbs	J	19
20459B	16x6 HD 8H ALUM BLACK	8 x 6.5	4.90"	3960 lbs	J	20
20457	17.5X6.75 ALUM SILVER	8 x 6.5	4.90"	4850 lbs	HC	26

# ALUMINUM TRAILER WHEELS



## 5-STAR ALUMINUM\*

### SPECIFICATIONS

PART #	DESCRIPTION	BOLT CIRCLE	LOAD
20164	12X4 4H	4 on 4	1220 lb
20163	12X4 5H	5 on 4.5	1520 lb
20270	13X5 4H	4 on 4	1100 lb
20258	13X5 5H	5 on 4.5	1660 lb
20305	14X5.5 5H	5 on 4.5	1900 lb
22644	15X5 5H	5 on 4.5	1820 lb
20518	15X6 5H	5 on 4.5	2150 lb
20516	15X6 6H	6 on 5.5	2830 lb
22689	16X7 6H	6 on 5.5	3200 lb
22691	16X7 8H	8 on 6.5	3200 lb
**22692	16X6HD 8H	8 on 6.5	3960 lb

\*\*OFFSET .8mm out



## 7-STAR ALUMINUM\*

### SPECIFICATIONS

PART #	DESCRIPTION	BOLT CIRCLE	LOAD
22320	13X4.5 4H	4 on 4	1660 LB
22321JF	13X4.5 5H	5 on 4.5	1725 LB
22329JF	14X5.5 5H	5 on 4.5	2040 LB
22641	15X5 5H	5 on 4.5	2150 LB
22653JF	15X6 5H	5 on 4.5	2540 LB
22654JF	15X6 6H	6 on 5.5	2830 LB
22661JF	16X6.5 6H	6 on 5.5	3200 LB
22662JF	16X6.5 8H	8 on 6.5	3960 LB



## SPLIT SPOKE ALUMINUM\*

### SPECIFICATIONS

PART #	DESCRIPTION	BOLT CIRCLE	LOAD
22317HWT	10X6	5 on 4.5	1765 LB
22318HWT	12X4	4 on 4	1220 LB
22319HWT	12X4	5 on 4.5	1520 LB
22322HWT	13X4.5 4H	4 on 4	1660 LB
22323JF	13X4.5 5H	5 on 4.5	1725 LB
22330JF	14X5.5 5H	5 on 4.5	2040 LB
22647JF	15X6 5H	5 on 4.5	2540 LB
22648JF	15X6 6H	6 on 5.5	2830 LB
22658JF	16X6.5 6H	6 on 5.5	3200 LB
22659JF	16X6.5 8H	8 on 6.5	3640 LB
22660JF	16X6.5 8H	8 on 6.5	3960 LB

\*CAPS & LUGS NOT INCLUDED



# ALUMINUM TRAILER WHEELS



## SPLIT SPOKE ALUMINUM BLACK

### SPECIFICATIONS

PART #	SIZE	BOLT PATTERN	BORE SIZE	LOAD RATING	WEIGHT
22330JFB	14X5.5	5/4.50 (5/114.3)	3.19	1900 @ 60 PSI	13.64
22647JFB	15X6	5/4.50 (5/114.3)	3.19	2150 @ 60 PSI	16.28
22648JFB	15X6	6/5.50 (6/139.7)	4.25	2830 @ 80 PSI	15.18
22658JFB	16X6	6/5.50 (6/139.7)	4.25	3580 @ 80 PSI	18.04
22654JFB	16X6	8/6.50 (8/165.1)	4.90	3580 @ 100 PSI	18.48
22660JFB	16X6.5	8/6.50 (8/165.1)	4.90	3960 @ 100 PSI	18.48

CAPS & LUGS NOT INCLUDED



## ALUMINUM MOD MACHINED/CLEAR COATED

### SPECIFICATIONS

PART #	SIZE	BOLT PATTERN	BORE SIZE	LOAD RATING	WEIGHT
22327	14X5.5	5/4.50 (5/114.3)	3.19	1900 @ 60 PSI	14.96
22627	15X6	5/4.50 (5/114.3)	3.19	2150 @ 60 PSI	18.04
22640	15x6	5/5 (5/127)	3.19	2150 @ 60 PSI	18.04
22646	15X6	6/5.50 (6/139.7)	4.25	2540 @ 80 PSI	17.16
22664	16X6	6/5.50 (6/139.7)	4.25	3200 @ 80 PSI	20.02
22657	16X7	6/5.50 (6/139.7)	4.25	3200 @ 110 PSI	20.02
22655	16X7	8/6.50 (8/165.1)	4.90	3200 @ 110 PSI	20.02
22656	16X7HD	8/6.50 (8/165.1)	4.90	3960 @ 110 PSI	20.02
20735*	17.5X6.75	8/6.50 (9/16" lugs & caps included)	4.90	4850 @ 110 PSI	34.0
22702*	17.5X6.75HD	8/6.50 (5/8" lugs & caps included)	4.77	6050 @ 110 PSI	34.0

CAPS & LUG NUTS NOT INCLUDED UNLESS NOTED



See [AmericanaTire.com](http://AmericanaTire.com) for current specifications



## T10/BM BLACK MACHINED/CLEAR COATED

### SPECIFICATIONS

ATW PART #	WHEEL PART #	SIZE	BOLT PATTERN	BORE SIZE	LOAD RATING	WEIGHT
22501	T10-45545BM*	14x5.5	5/4.50 (5/114.3)	3.19	2200 @ 65 PSI	14.84
22503	T10-56545BM*	15x6	5/4.50 (5/114.3)	3.19	2150 @ 80 PSI	17.53



## T10/SM SILVER MACHINED/CLEAR COATED

### SPECIFICATIONS

ATW PART #	WHEEL PART #	SIZE	BOLT PATTERN	BORE SIZE	LOAD RATING	WEIGHT
22502	T10-45545SM*	14x5.5	5/4.50 (5/114.3)	3.19	2200 @ 65 PSI	14.84
22504	T10-56545SM*	15x6	5/4.50 (5/114.3)	3.19	2150 @ 80 PSI	17.53
22507	T10-56655SM**	15x6	6/5.50 (6/139.7)	3.75	2830 @ 80 PSI	17.53



## T09/SM SILVER MACHINED/CLEAR COATED

### SPECIFICATIONS

ATW PART #	WHEEL PART #	SIZE	BOLT PATTERN	BORE SIZE	LOAD RATING	WEIGHT
22633	T09-45545SM*	14X5.5	5/4.50 (5/114.3)	3.19	2200 @ 75 PSI	14.84
22634	T09-56545SM*	15X6	5/4.50 (5/114.3)	3.19	2150 @ 80 PSI	17.53
22635	T09-56655SM**	15X6	6/5.50 (6/139.7)	3.75	3200 @ 80 PSI	17.64



## T09/BM BLACK MACHINED/CLEAR COATED

### SPECIFICATIONS

ATW PART #	WHEEL PART #	SIZE	BOLT PATTERN	BORE SIZE	LOAD RATING	WEIGHT
22623	T09-45545BM*	14X5.5	5/4.50 (5/114.3)	3.19	2200 @ 75 PSI	14.84
22624	T09-56545BM*	15X6	5/4.50 (5/114.3)	3.19	2150 @ 80 PSI	17.53
22626	T09-56655BM**	15X6	6/5.50 (6/139.7)	3.75	3200 @ 80 PSI	17.64

CAPS & LUGS NOT INCLUDED / \*5 SPOKE DESIGN /  
\*\*6 SPOKE DESIGN / \*\*\*8 SPOKE DESIGN





## T08/BMLS BLACK MACHINED LIP & SPOKE / CLEAR COATED

### SPECIFICATIONS

ATW PART #	WHEEL PART #	SIZE	BOLT PATTERN	BORE SIZE	LOAD RATING	WEIGHT
22331	T08-35545BMLS	13X5	5/4.50 (5/114.3)	3.19	1660 @ 65 PSI	14
22332	T08-45545BMLS*	14X5.5	5/4.50 (5/114.3)	3.19	2200 @ 75 PSI	14.84
22333	T08-56545BMLS*	15X6	5/4.50 (5/114.3)	3.19	2150 @ 80 PSI	17.64
22334	T08-56655BMLS**	15X6	6/5.50 (6/139.7)	3.75	2860 @ 80 PSI	17.64
22335	T08-66867BMLS***	16X6	8/6.50 (8/165.1)	4.90	3750 @ 110 PSI	19.4



## T08/MBML MATTE BLACK MATTE MACHINED LIP/CLEAR COATED

### SPECIFICATIONS

ATW PART #	WHEEL PART #	SIZE	BOLT PATTERN	BORE SIZE	LOAD RATING	WEIGHT
22358	T08-35545MBML	13X5	5/4.50 (5/114.3)	3.19	1660 @ 65 PSI	14
22359	T08-45545MBML*	14X5.5	5/4.50 (5/114.3)	3.19	2200 @ 75 PSI	14.84
22360	T08-56545MBML*	15X6	5/4.50 (5/114.3)	3.19	2150 @ 80 PSI	17.64
22361	T08-56655MBML**	15X6	6/5.50 (6/139.7)	3.75	2830 @ 80 PSI	17.64
22357	T08-66867MBML***	16X6	8/6.50 (8/165.1)	4.90	3750 @ 110 PSI	19.4



## T08/MB MATTE BLACK/CLEAR COATED

### SPECIFICATIONS

ATW PART #	WHEEL PART #	SIZE	BOLT PATTERN	BORE SIZE	LOAD RATING	WEIGHT
22352	T08-35545MB	13X5	5/4.50	3.19	1660 @ 65 PSI	14
22353	T08-45545MB	14X5.5	5/4.50	3.19	2200 @ 75 PSI	14.84
22354	T08-56545MB	15X6	5/4.50	3.19	2150 @ 80 PSI	17.64
22355	T08-56655MB	15X6	6/5.50	3.75	2860 @ 80 PSI	17.64
22356	T08-66867MB***	16X6	8/6.5	4.90	3750 @ 110 PSI	19.4



## T07/GM GRAY MACHINED/CLEAR COATED

### SPECIFICATIONS

ATW PART #	WHEEL PART #	SIZE	BOLT PATTERN	BORE SIZE	LOAD RATING	WEIGHT
20283GM	T07-35545GM*	13X5.5	5/4.50 (5/114.3)	3.19	1660 @ 65 PSI	12.13
20284GM	T07-45545GM*	14X5.5	5/4.50 (5/114.3)	3.19	2200 @ 75 PSI	14.81
22649GM	T07-56545GM*	15X6	5/4.50 (5/114.3)	3.19	2150 @ 80 PSI	17.49
22653GM	T07-56655GM**	15X6	6/5.50 (6/139.7)	3.75	2860 @ 80 PSI	17.60
22658GM	T07-66655GM**	16X6	6/5.50 (6/139.7)	3.75	3200 @ 80 PSI	19.80
22661GM	T07-66867GM***	16X6	8/6.50 (8/165.1)	4.90	3750 @ 110 PSI	19.36



## T07/BM BLACK MACHINED/CLEAR COATED

### SPECIFICATIONS

ATW PART #	WHEEL PART #	SIZE	BOLT PATTERN	BORE SIZE	LOAD RATING	WEIGHT
20283BM	T07-35545BM*	13X5.5	5/4.50 (5/114.3)	3.19	1660 @ 65 PSI	12.13
20284BM	T07-45545BM*	14X5.5	5/4.50 (5/114.3)	3.19	2200 @ 75 PSI	14.81
22649BM	T07-56545BM*	15X6	5/4.50 (5/114.3)	3.19	2150 @ 80 PSI	17.49
22653BM	T07-56655BM**	15X6	6/5.50 (6/139.7)	3.75	2860 @ 80 PSI	17.60
22658BM	T07-66655BM**	16X6	6/5.50 (6/139.7)	3.75	3200 @ 80 PSI	19.80
22661BM	T07-66867BM***	16X6	8/6.50 (8/165.1)	4.90	3750 @ 110 PSI	19.36



## T07/SM SILVER MACHINED/CLEAR COATED

### SPECIFICATIONS

ATW PART #	WHEEL PART #	SIZE	BOLT PATTERN	BORE SIZE	LOAD RATING	WEIGHT
20283SM	T07-35545SM*	13X5.5	5/4.50 (5/114.3)	3.19	1660 @ 65PSI	12.13
20284SM	T07-45545SM*	14X5.5	5/4.50 (5/114.3)	3.19	1900 @ 60 PSI	14.81
22649SM	T07-56545SM*	15X6	5/4.50 (5/114.3)	3.19	2150 @ 60 PSI	17.49
22653SM	T07-56655SM**	15X6	6/5.50 (6/139.7)	3.75	2830 @ 80 PSI	17.60
22658SM	T07-66655SM***	16X6	6/5.50 (6/139.7)	3.75	3200 @ 80 PSI	19.80
22661SM	T07-66867SM***	16X6	8/6.50 (8/165.1)	4.90	3750 @ 110 PSI	19.36

CAPS & LUGS NOT INCLUDED / \*5 SPOKE DESIGN /  
\*\*6 SPOKE DESIGN / \*\*\*8 SPOKE DESIGN





## T03/SM SILVER MACHINED/CLEAR COATED

### SPECIFICATIONS

ATW PART #	WHEEL PART #	CAP PART #	SIZE	BOLT PATTERN	BORE SIZE	LOAD RATING	WEIGHT
22346	T03-45545T	S1050-319**	14X5.5	5/4.50 (5/114.3)	3.19	1900 @ 65 PSI	13.64
22347	T03-56545T	S1050-319**	15X6	5/4.50 (5/114.3)	3.19	2150 @ 80 PSI	16.28
22348	T03-56655T	S1050-425**	15X6	6/5.50 (6/139.7)	4.25	3200 @ 95 PSI	15.18
22351	T03-66655T	S1050-425**	16X6	6/5.50 (6/139.7)	4.25	3200 @ 80 PSI	18.04
22349	T03-66866T	S1050-490**	16X6	8/6.50 (8/165.1)	4.90	3580 @ 94 PSI	18.48



## T02/SM SILVER MACHINED/CLEAR COATED

### SPECIFICATIONS

ATW PART #	WHEEL PART #	CAP PART #	SIZE	BOLT PATTERN	BORE SIZE	LOAD RATING	WEIGHT
22329	T02-45545T	S1050-319**	14X5.5	5/4.50 (5/114.3)	3.19	1900 @ 65 PSI	15.84
22653	T02-56545T	S1050-319**	15X6	5/4.50 (5/114.3)	3.19	2150 @ 80 PSI	18.48
22654	T02-56655T	S1050-425**	15X6	6/5.50 (6/139.7)	4.25	3200 @ 95 PSI	17.60
22661	T02-66655T	S1050-425**	16X6	6/5.50 (6/139.7)	4.25	3200 @ 94 PSI	19.58
22662	T02-66867T	S1050-490**	16X6	8/6.50 (8/165.1)	4.90	3750 @ 110 PSI	20.02

CAPS & LUGS NOT INCLUDED / \*5 SPOKE DESIGN /  
\*\*6 SPOKE DESIGN / \*\*\*8 SPOKE DESIGN







# ASSEMBLIES



**The “smoke” that is generated during inflation is actually condensation.**

As part of the KENDA ADVANTAGE, top wheels and tires are expertly assembled for ease of installation. Listed are key assemblies but many more are available.





KR371 on Solid Galvanized wheel



KR353 on Solid White wheel



KR399 on Solid Galvanized wheel

## 570-8" K353

	K353 B ply	K353 C ply	K353 D ply
4H SOLID CENTER GALV	30090	30130	30154
4H SOLID CENTER WH	30080	30120	30153
5H SOLID CENTER GALV	30110	30150	30156
5H SOLID CENTER WH	30100	30140	30155

## 480-8" K371

	K371 B ply	K371 C ply
4H SOLID CENTER GALV	30010	30050
4H SOLID CENTER WH	30000	30040
5H SOLID CENTER GALV	30030	30070
5H SOLID CENTER WH	30020	30060

## 10" K399

	205/65-10" B ply	205/65-10" C ply	205/65-10" D ply	205/65-10" E ply	165/65-8" C ply	215/60-8" B ply	215/60-8" C ply	215/60-8" D ply
4H SOLID CENTER WH	3H330	3H370	3H410	3H460	3H200	3H250	3H290	3H326
5H SOLID CENTER GALV	3H360	3H400	3H440	30690/3H490	3H240	3H280	3H320	3H325
5H SOLID CENTER WH	3H350	3H390	3H430	3H480	3H220	3H270	3H310	3H323
5H SOLID CENTER WH w offset	N/A	N/A	N/A	N/A	3H221	N/A	N/A	N/A
5H SOLID CENTER SILVER	3H359	3H394	3H432	3H482	3H222	3H282	3H312	3H324
4H SOLID CENTER WH/ GRAY	N/A	N/A	N/A	N/A	N/A	N/A	3H294	N/A



KR25 on Mod Black wheel



KR353 on Spoke Galvanized wheel

## ST145/R12 KR25

	KR25 D ply	KR25 E ply
5H MOD BLACK	35354	31252*
5H MOD STARLITE SILVER	31201	31214
5H HD MOD GALV	31211	31218HD*
5H MOD SILVER	31203	31214
5H SPOKE GALV	31202	31223

## 530-12" K353

	K353 C ply	K353 D ply
5H MOD WH STRIPE	30831	30864
4H SPOKE WH STRIPE	30780	30855
5H SPOKE WH STRIPE	30820	30859
5H SPOKE GALV	30850	30861
5H SPOKE SILVER	30818	30864

## 480-12" K353

	K353 B ply	K353 C ply
5H MOD GALV	30595	30672
5H MOD SILVER	30586	30673
4H SPOKE GALV	30550	30630
4H SPOKE WH STRIPE	30540	30620
5H SPOKE GALV	30590	30670
5H SPOKE WH STRIPE	30580	30660
5H SPOKE SILVER	30584	30664
5H SOLID CENTER WH	30560	30640







KR35 on Directional Silver wheel



KR550 on Spoke White Stripe wheel



KR558 on Mod Silver wheel

## ST175/80 R or D\* 13

	KR35 C ply	KR03 C ply	KR03 D ply	K558* C ply	K550* B ply	K550* C ply	K550* D ply
5H MOD GALV	31949	31975	31993	3S231	3S090	3S230	31238
5H MOD SILVER	31942	31955	31243	3S153	3S056	3S145	3S243
5H MOD BLACK	31937	31944	31990	3S266	N/A	3S147	N/A
5H SPOKE WH STRIPE	35083	31951	31985	3S139	3S050	3S140	31233
5H SPOKE GALV	31941	31952	31994	3S161	3S060	3S160	31242
5H SPOKE SILVER	31943	31954	31988	3S146	3S061	3S143	31244
5H SPOKE BLACK	N/A	31961	N/A	3S166	3S063	3S142	3S330
5H-4.5 DIRECTIONAL GALV	N/A	31971	32005	N/A	N/A	3S167	3S246
5H DIRECTIONAL SILVER	32054	31967	31981	3S164	3S965	3S967	3S245

\*Bias



## ST185/80 R or D\* 13

	KR03 C ply	KR03 D ply	K550* D ply
5H MOD GALV	31984	32025	3S336
5H SPOKE GALV	31987	32008	3S334
5H DIRECTIONAL Chrome	32017	32034	3S327
5H DIRECTIONAL Silver	31986	32031	3S328
5H T08 BMLS BLACK	32028	N/A	N/A

\*Bias





KR35 on Split Spoke Black wheel



KR03 on Directional Chrome wheel

## ST205/75R 14

	KR35 C ply	KR35 D ply	KR03 C ply
5H MOD SILVER	32207	32354	32150
5H MOD GALV	32222	31359	32148
5H SPOKE GALV	32067	32178	32182
5H SPOKE WH STRIPE	32068	32179	32181
5H SPOKE SILVER	32069	31373	32199
5H DIRECTIONAL Silver	32128	N/A	32194
5H DIRECTIONAL Chrome	32129	N/A	32115
5H SPLIT SPOKE Silver	32121	32269JF	32211
5H SPLIT SPOKE Black	32598	32269JFB	32192
5H 7-STAR ALUM	32135	34709	32126
5H T08/BMLS BLACK	32294	34678	34697
5H TYPE19 BLACK MACHINED	32191BM	32151BM	N/A

## ST205/75 R or D\* 14

	KR03 C ply	KR03 D ply
5H MOD Black	32131	32215
5H SPOKE WH STRIPE	32153	32161
5H SPOKE SILVER	32112	32214
5H SPOKE BLACK	39065	32217
5H T07 BLACK MACHINED	31998BM	33020B7

\*Bias

## ST215/75 R 14

	KR03 C ply
5H DIRECTIONAL CHROME	32183
5H T08 BLACK MACHINED	34692







KR550 on Spoke Galvanized wheel



KR558 on Spoke White Stripe wheel



KR03 on Type 19 wheel

## ST205/75 R or D\* 15

	KR35 C ply	KR35 D ply	KR03 C ply	KR03 D ply	K558* C ply	K550* C ply	K550* D ply
5H MOD BLACK	32239B	31353	32238B	32424	3S807	3S664	3S675
5H MOD SILVER	32220	32354	32401	32418	3S736	3S636	3S745
5H MOD WH STRIPE	39064	32441	32406	32423	3S541	3S645	3S759
5H SPOKE GALV	32257	35837	32397	32410	3S666	3S650	3S805
5H SPOKE SILVER	32221	N/A	32249	32306	3S806	3S656	N/A
5H SPOKE WH STRIPE	35088	N/A	32395	32415	3S540	3S640	3S739
5H/TYPE19/BLK MACH	32152BM	N/A	33061	32083BM	N/A	N/A	N/A
5H/TYPE19/GUN METAL	32152GM	N/A	33062	32083GM	N/A	N/A	N/A
5H/TYPE19/SILVER MACH	32152SM	N/A	32093SM	32083SM	3S761SM	N/A	N/A
5H SPLIT SPOKE SILVER	32121	32270	32211	N/A	N/A	3S549JF	N/A

\*Bias

## ST225/75 R or D\* 15

	KR35 D ply	KR03 D ply	KR03 E ply	K558* D ply	K550* D ply
6H MOD BLACK	33043	32565	32612	3S891	3S886
6H MOD GALV	32607	32647	32614	N/A	3S885
6H MOD SILVER	32926/33042	32645	32682	3S718	3S918
6H SPOKE BLACK	32944	32566	32216	N/A	3S878
6H SPOKE WH STRIPE	33059	32664	32680	3S879	3S870
6H SPOKE GALV	32599	32666	32678	3S881	3S880
6H SPLIT SPOKE ALUM	33058	32572JFBT	32826JF	N/A	3S897
6H/TYPE19/BLK MACH	32153BM	39076	32154BM	N/A	N/A

\*Bias



KR35 on Mod White wheel



KR03 on Spoke Galvanized wheel



KR18 on Spoke Black wheel

## ST235/80R 16

	KR35 E ply	KR18 E ply	KR03 E ply
8H MOD BLACK	34915	32743B	34902B
8H MOD SILVER	34947	32760/35202**	34943
8H MOD WH STRIPE	34936	32743	34902
8H SPOKE BLACK	32318	32696	35006
8H SPOKE GALV	35082	32698	34906
8H SPOKE WH STRIPE	34899	32756	34900
8H DUAL STARLITE	34911	35196	34945

\*\*Offset

## ST235/85R 16

	KR18 F ply
8H HD MOD SILVER	35095
8H MOD BLACK	35117
8H TYPE19 BLK MACH	35020BM

## WHEEL MATCHING

The diameters listed below represent the recommended sizes for wheel mounting faces. The dimensions indicated are for the flat contact that interface with the hub.

BOLT PATTERN	HUB DIAMETER	WHEEL DIAMETER	VALVE HOLE	STUD SIZE	WHEEL BOLT TORQUE
4 on 4.0"	5.50"	12" & 13"	.45	1/2" -20 -60*	50-75 LB/FT
5 on 4.5"	6.50"	12" & 13"	.45	1/2" -20 -60*	50-75 LB/FT
5 on 4.5"	6.50"	14" & 15"	.45	1/2" -20 -60*	90-120 LB/FT
5 on 5"	6.50"	15"	.45	1/2" -20 -60*	90-120 LB/FT
6 on 5.5"	7.4"	14.5" & 15"	.45	1/2" -20 60*	90-120 LB/FT
6 on 5.5"	7.4"	16" & 16.5"	.625	1/2" -20 60*	90-120 LB/FT
6 on 5.5"	7.4"	16" & 16.5"	.625	9/16" -18 60*	175-225 LB/FT
8 on 6.5"	8.25"	14.5"	.45	5/8" -18 90*	175-225 LB/FT
8 on 6.5"	8.25"	16" & 16.5"	.625	1/2" -20 60*	90-120 LB/FT
8 on 6.5"	8.25"	16" & 16.5"	.625	9/16" -18 60*	175-225 LB/FT
8 on 6.5"	8.25"	16" & 16.5"	.625	5/8" -18 90*	175-225 LB/FT
8 on 6.5"	Hub Piloted	14.5"	.45	5/8" -18 Flange	275-325 LB/FT
8 on 6.5"	Hub Piloted	16", 16.5" & 17.5"	.625	5/8" -18 Flange	275-325 LB/FT

## TIRE SPEED RATING CHART

**J 62mph**

**L 75mph**

**M 81mph**

**N 87mph**

**Q 100mph**

Always follow posted speed limit

## LOAD RANGE PLY RATING

**B 4**

**C 6**

**D 8**

**E 10**

**F 12**

**G 14**

**H 16**



# TIRE & WHEEL ACCESSORIES

Part No.	Bore Size (inches)	Fits Wheel Sizes	Description
<b>STAINLESS STEEL CENTER CAP</b>			
90175	3.19"	12, 13, 14, & 15" 5H	w/Black Button
90175L	3.19"	12, 13, 14, & 15" 5H	w/Chrome Button
90176	3.19"	12, 13, 14, & 15" 5H	w/Chrome Button
90159	3.75"	15 6H, 16 6H*	w/Chrome button
90077	4.25"	15 & 16" 6H	w/Black Button
90077c	4.25"	15 & 16" 6H	w/Chrome Button
90156	4.82"	16" 8H 3960lbs	w/Black Button
90156c	4.82"	16" 8H 3960lbs	w/Chrome Button
90078	5.12"	16" 8H 3200lbs	w/Black Button
90078c	5.12"	16" 8H 3200lbs	w/Chrome Button
<b>CHROME PLATED STEEL CENTER CAP</b>			
90113	2.80"	12 & 13" 4H, 10" 4H & 5H	Closed End
90153	3.19"	12, 13, 14, & 15" 5H	Closed End
<b>OPEN END CHROME PLATED STEEL CENTER CAP</b>			
90165	3.19"	12, 13, 14, & 15" 5H	Black w/Black Button
90102	3.33"	13 & 14" 5H	w/Black Button
90160c	3.75"	15 6H 16 6H*	w/Chrome Button
90154	4.25"	15 & 16" 6H	w/Black Button
90154C	4.25"	15 & 16" 6H	w/Chrome Button
90121	3.18"	12, 13, 14, & 15" 5H	w/Black Button
90121c	3.18"	12, 13, 14, & 15" 5H	w/Chrome Button
90165	3.18"	12, 13, 14, & 15" 5H	Black w/Black Button
90083c	3.33"	13 & 14" 5H	w/Chrome Button
90195	3.33"	13 & 14" 5H	w/Chrome Button
90182	4.25	15 & 16" 6H	Black w/Black Button
90114	4.90"	16" 8H	w/Chrome Button

\* check application



106ESS-60

We carry a full line of wheel accessories, from wheel caps to valves to lug nuts.

Call any one of our locations for more details about these accessories.



20903

20904

20906

90070

Part No.	TR Part No.	Length (inches)	Rim Hole
<b>VALVES</b>			
20902	TR-412	1"	.453 Snap in
20903	TR-413	1-1/4"	.453 Snap in
20905	TR-415	1-1/4"	.625 Snap in
20906	TR-416	1-1/4"	.453 Snap in
20904	600HP	1-1/4"	.453 Snap in
20901	TR-600HP	1-1/4"	.453 Snap in
20907	800HP	1-1/2"	.453 Snap in
20914	TR-501 Brass	1-1/2"	0.625
20916	TR-500 Brass	2"	0.625
20911	TR-573 Brass	3-3/4"	0.625
20917	TR-574 Brass	4-3/8"	0.625
20918	TR-574 Double Bend Brass	-	0.625
20919	Bottom Mount 21° Bend	-	0.625

<b>LUG NUTS</b>			
Part No.	Size	Material	Test Type
09905	1/2 x 20 x 7/8" 3/4"HEX	Zinc Plated Open Acorn Bulge Nut	
09914	1/2 x 20 x 1-3/8" 3/4"HEX	Black Acorn Bulge Closed End Nut	
09923	9/16 x 18 x 1-3/4" 3/4"HEX	Black HD Acorn Bulge Nut 2 piece	
90050	1/2 x 20 x 1-1/2" 13/16"HEX	Chrome Plated Acorn Nut	24H salt spray
90052	1/2 x 20 x 1-7/8" 13/16"HEX	Chrome Plated Acorn Nut	24H salt spray
80096	1/2 x 20 x 1-7/8" 13/16"HEX	Chrome Plated Acorn Nut	96H salt spray
90049	1/2 x 20 x 1-3/4" 3/4"HEX	Chrome Plated Bulge Nut 2 piece	96H salt spray
90054	1/2 x 20 x 1-3/8" 13/16"HEX	Stainless Steel Capped Nut 2 piece	
90070	1/2 x 20 x 1-7/8 7/8"HEX	Stainless Steel Capped Acorn Nut	
90067	9/16 x 18 x 1-7/8" 7/8"HEX	Stainless Steel Capped Acorn Nut	

## IMPORTANT SAFETY INFORMATION

Improperly clamped wheels may loosen and could come off unexpectedly while traveling, resulting in a dangerous situation. It is recommended that all wheel fasteners be checked frequently and retorqued to the appropriate level as needed.

Also of vital importance is understanding the different wheel clamping systems. Smaller steel wheels up to and including some 16" varieties are normally stud piloted and will typically use a 60-degree cone nut. The cone portion of the nut mates to a matching cone seat in the wheel center. These are generally 1/2" - 20 or 9/16" - 18 thread sizes. There are some larger wheels that are designed to be clamped with 5/8" nuts featuring a 90-degree cone seat. This type of wheel generally does not have a center hole that closely fits the hub.

90-degree cone nuts must NEVER be used in 60-degree cone seat wheels. The use of mismatched nuts will result in a loss of clamping force and can cause wheel run-off.

Larger wheels generally will be hub piloted and require either clamping rings with 90 degree cone nuts to attach them to the hub or they can be mounted with flange nuts directly on the wheel. The benefit of the clamp ring system is they require lower torque. Both of these mounting systems typically use 9/16" - 18" or 5/8" - 18 thread size. Hub piloted wheels require a close fit of the center hole to the hub.

Make sure you understand the requirements of the wheels and clamping systems that you specify for your vehicles. Misuse can result in costly and dangerous failures.

# 5 THINGS TO KNOW BEFORE YOU TOW

Use this pre-departure safety checklist any time you plan to tow a trailer.

## Inspect before you go.

- Check – and correct – tire pressure on the tow vehicle and trailer, including the spare tire.
- Make sure your wheel, lug nuts/bolts on the tow vehicle are tightened to the correct torque.
- Check that all items are securely fastened on and in the trailer.
- Make sure all running lights, brake lights, turn signals, and hazard lights are working.

## Maintain your tires after use.

- Store your trailer properly as environmental impact can deteriorate your tire condition and performance.

## Know the load capacity of your tires.

- Do not exceed the manufacturers stated load capacity and load your trailer properly with the right weight distribution with at least 60% of the load toward the front of trailer.

## Know the proper stopping distance.

- For following distances, a general rule of thumb is at least a 325-foot gap (about 5 seconds) between your vehicle and the vehicle or obstacle in front of you.

## Respond to sway the right way.

- Gas off, brake off, steer straight and wait.



**KENDA**  
**AMERICANA**  
TIRE AND WHEEL



Member

**RVIA**  
RECREATION VEHICLE  
INDUSTRY ASSOCIATION

Part# CATATW21

©2021 Kenda Tire All Rights Reserved

## CORPORATE HEADQUARTERS

Elkhart, IN  
574-522-9450  
Fax: 574-522-9680  
atw-elkhart@americanatire.com

York, PA  
717-793-9700  
Fax: 717-793-9701  
atw-york@americanatire.com

Reynoldsburg, OH  
614-729-7860  
Fax: 614-866-9805  
info@americanatire.com

Blackshear, GA  
912-449-4414  
Fax: 912-449-4166  
atw-blackshear@americanatire.com

Marshfield, MO  
417-468-1650  
Fax: 417-468-1362  
atw-marshfield@americanatire.com